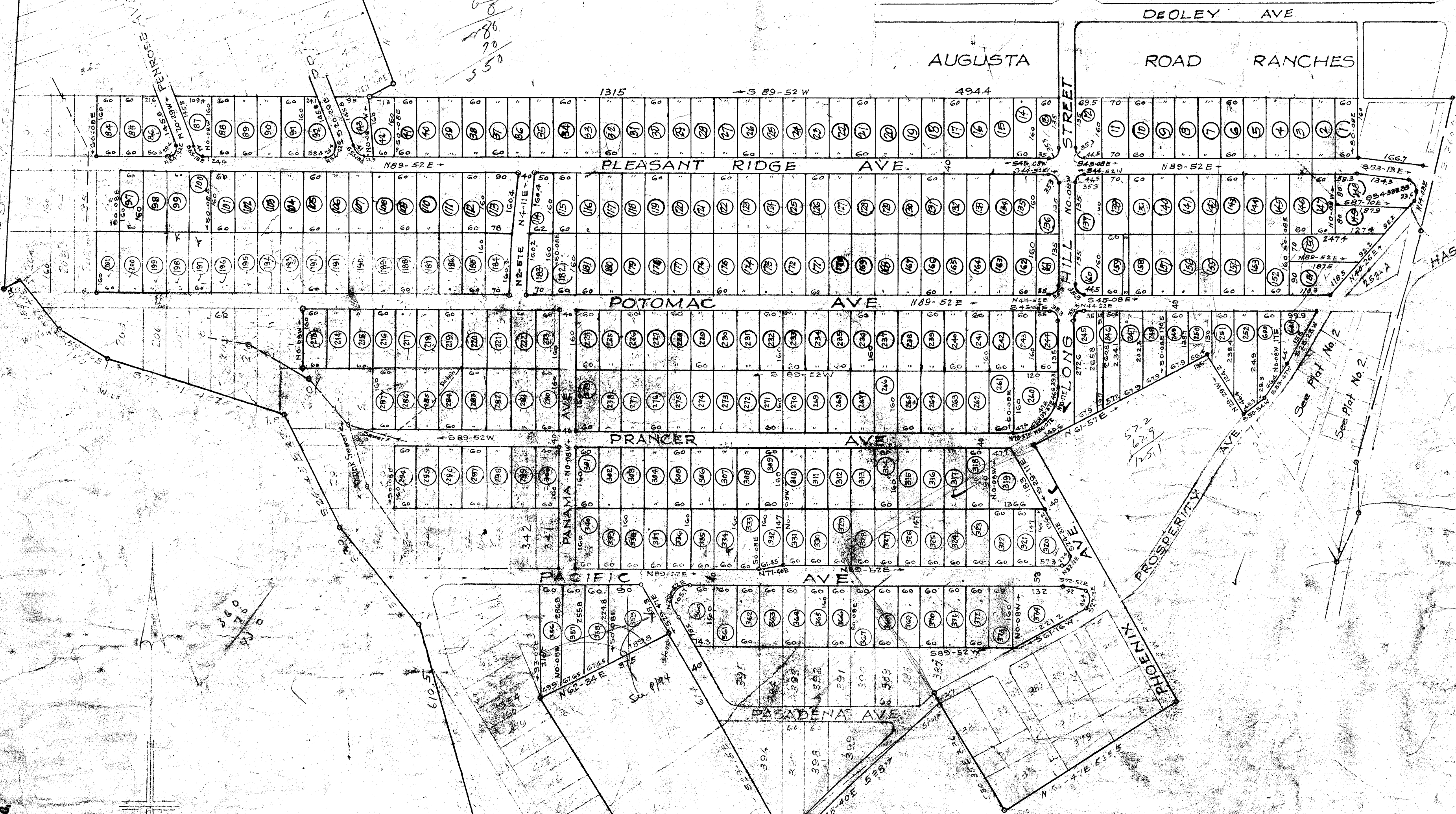


Handwritten notes and signatures in the top left corner, including "E. E. ...".

FILED
GREENVILLE CO. S. C.
OCT 13 4 30 PM 1950
OLLIE FARNSWORTH
R. M. C.



Map recorded in ...
Register of Deeds
Greenville County, S. C.

Handwritten numbers: 240, 270, 316, 340.

PRELIMINARY PLEASANT VALLEY

GREENVILLE S. C.
Scale 1/2" = 200' April 1946

TRAMER REAL ESTATE CO.
EXCLUSIVE SELLING AGENTS

DAULTON & NEVILL

Addition to Map made Nov. 1948
Addition to Map made June 1946
Lots 224-241 May 1948
Lots 113-114 & 183 Revised Sept. 1948
" 152-246 Aug 1949

Addition to Plat made Feb. 1950 (Lot 280-281-294-300)
Sept.

OCT 13 1950
25063

Lots numbered in Circles have been staked with Iron Pins